



ALLROAD



Sole made in high quality rubber, technology **AQUA GRIP**. Its design and characteristics allow us to use it from asphalt and smooth pavements to irregular and wet terrain, ideal for the city.

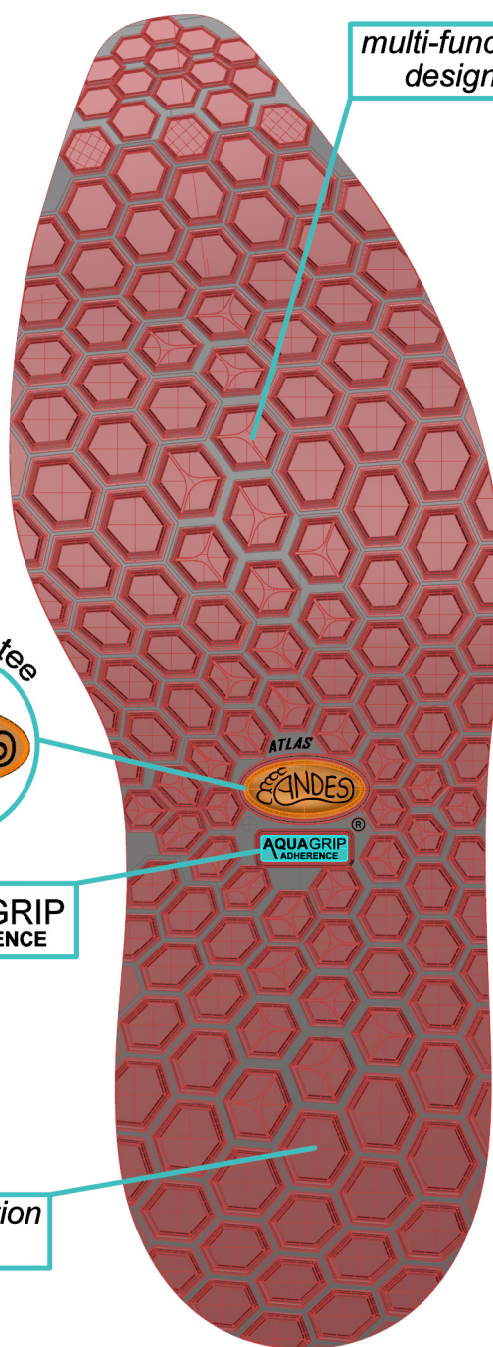
Rubber features :

Hardness <small>ISO 7819-1</small>	ShA	65
Density <small>ISO 2781:15</small>	g/cm ³	1,16 - 1,22
Abrasion <small>ISO 4640:13</small>	mm ³	60 - 70
Sizes :	39-40-41 42-43-44 45-46-47	

Colors available :

Black
 Brown
 Ocher

Gluing procedure **AQUA GRIP** :
Sanding + Halogenated + Polyurethane glue



1 mm
 3 mm
 6 mm
 3 mm
 3 mm
 6 mm
 3 mm

Quality guarantee



AQUAGRIP
ADHERENCE

multi-function design

multi-function design